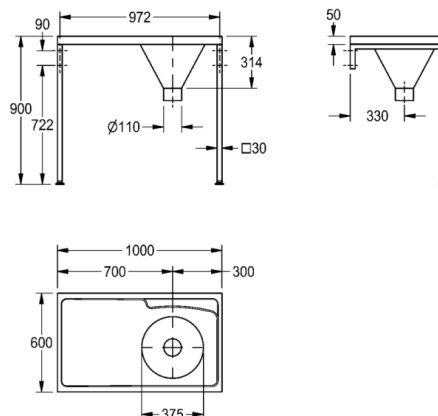


G22016L DUH Hospital disposal unit

MODEL RANGE: | G22016L | 207.0000.063

Utility sinks | Multi purpose sink



A DUH hospital disposal unit manufactured from 1.2 mm thick, grade 1.4301 (304) stainless steel with a satin polish finish. The top is turned down on all four edges and incorporates a wet area recess. Fitted with a sluice hopper at one end and has a back inlet for duct mounted cisterns. The hopper has a 110 mm dia. outlet which can accept a P or S trap, available as an extra. Stainless steel cisterns are available with stainless steel downpipes for duct mounting installations. For installations where the cistern is duct mounted a plastic whereas the stainless steel cistern can be 6, 7 or 9 litre capacity and all are fitted with 13 mm HP brass valve, plastic float and CP metal flushing lever handles. The unit should only be fed from a cistern or tank water supply. Unit can be mounted on either stainless steel cantilever brackets or stainless steel front leg supports. Front leg supports give a working height of 900 mm and have adjustable feet which can be screwed to the floor for extra stability. L or R after the code number refers to the handing of the drainer ie. left or right when facing front of unit. HTM Standard 64. LH drainer

Technical data

Bowl height	300.00 mm
Bowl width	375.00 mm
Material thickness	1.20 mm
Overall depth	600.00 mm
Overall height	900.00 mm
Overall width	1,000.00 mm
Drainer position	Left
Material	Stainless steel
Material code	1.4301 Chrome Nickel steel V2A
Tailor made	No
Bowl finish	Satin finish
Surface finish	Satin finished
Drainer or storage	Drainer
Outlet size	DN 100
Minimum flushing capacity	6.00 liter
Product code	207.0000.063

KWC. The new name of Franke Water Systems